



Surname _____

Other Names _____

Centre Number _____

Candidate Number _____

Candidate Signature _____

GCSE

COMBINED SCIENCE: SYNERGY

F

Foundation Tier Paper 2 Life and environmental sciences

8465/2F

Wednesday 22 May 2019

Afternoon

Time allowed: 1 hour 45 minutes

At the top of the page, write your surname and other names, your centre number, your candidate number and add your signature.

[Turn over]



J U N 1 9 8 4 6 5 2 F 0 1

BLANK PAGE



For this paper you must have:

- a ruler
- a protractor
- a scientific calculator
- the periodic table (enclosed)
- the Physics Equations Sheet (enclosed).

INSTRUCTIONS

- Use black ink or black ball-point pen.
- Answer ALL questions in the spaces provided. Do not write on blank pages.
- Do all rough work in this book. Cross through any work you do not want to be marked.
- In all calculations, show clearly how you work out your answer.

INFORMATION

- The maximum mark for this paper is 100.
- The marks for questions are shown in brackets.
- You are expected to use a calculator where appropriate.
- You are reminded of the need for good English and clear presentation in your answers.

DO NOT TURN OVER UNTIL TOLD TO DO SO



Answer ALL questions in the spaces provided.

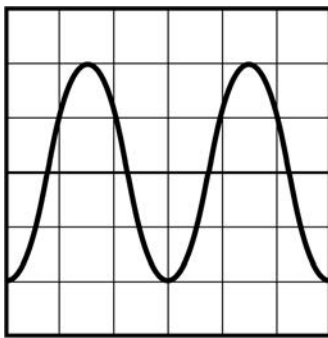
01

FIGURE 1 shows four waves, A, B, C and D.

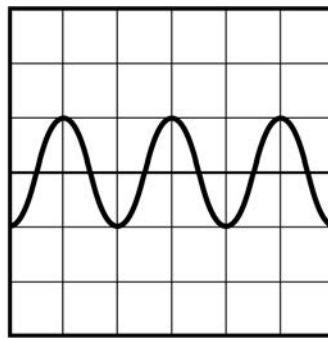
All four waves are shown on oscilloscope screens.

The oscilloscope settings are the same for each screen.

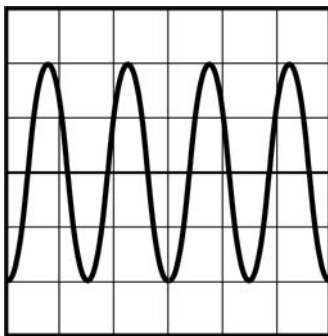
FIGURE 1



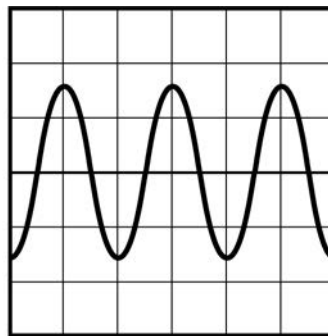
A



B



C



D



0 1 . 1 Which wave has the smallest amplitude?
[1 mark]

Tick (✓) **ONE** box.

A

B

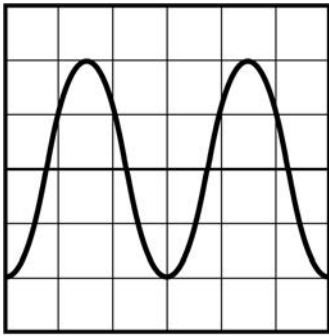
C

D

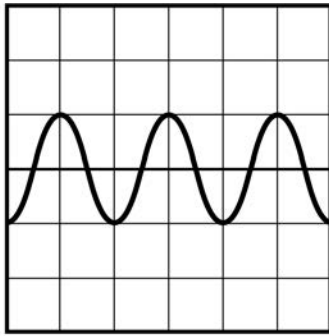
[Turn over]



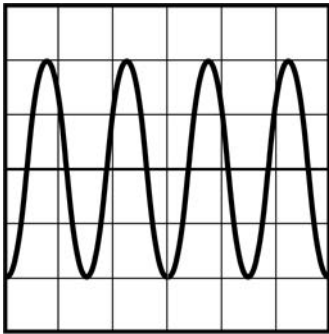
Repeat of FIGURE 1



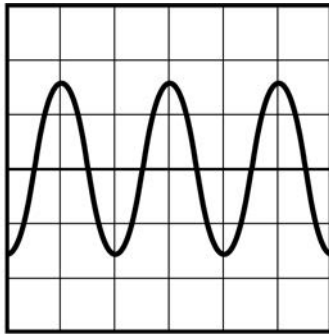
A



B



C



D

0 1 . 2 Which wave has the highest frequency?
[1 mark]

Tick (✓) ONE box.

A

B

C

D

0 1 . 3 How many complete wavelengths are shown
in wave A? [1 mark]

Number of complete wavelengths =

[Turn over]



0 1 . 4 Draw **ONE** line from each quantity associated with a wave to the unit the quantity is measured in. [3 marks]

QUANTITY

UNIT

Hz

frequency

m

period

m³

wavelength

m²

s



0 1 . 5 Which equation is used to calculate wave speed? [1 mark]

Tick (✓) ONE box.

Wave speed = frequency \times wavelength

Wave speed = $\frac{\text{frequency}}{\text{wavelength}}$

Wave speed = frequency – wavelength

Wave speed = $\frac{\text{wavelength}}{\text{frequency}}$

0 1 . 6 Waves can be longitudinal or transverse.

Which of the following is an example of a longitudinal wave? [1 mark]

Tick (✓) ONE box.

Sound

Visible light

Wave on a string

[Turn over]



Some students banged two blocks of wood together to produce a sound.

The students used a stopwatch to measure the time taken for the sound to travel 100 m

TABLE 1 shows the results.

TABLE 1

TEST	Time taken in SECONDS
1	0.32
2	0.36
3	0.34
MEAN	X

0 1 . 7 Calculate mean value X in TABLE 1. [1 mark]

X = _____ s



01.8 Determine the speed of sound in air.

Use your answer from Question 01.7.

Use the equation:

$$\text{speed} = \frac{\text{distance}}{\text{time}}$$

[1 mark]

Speed = _____ m/s

01.9 Why is it difficult to accurately measure the time taken for the sound to travel 100 m using a stopwatch? [1 mark]

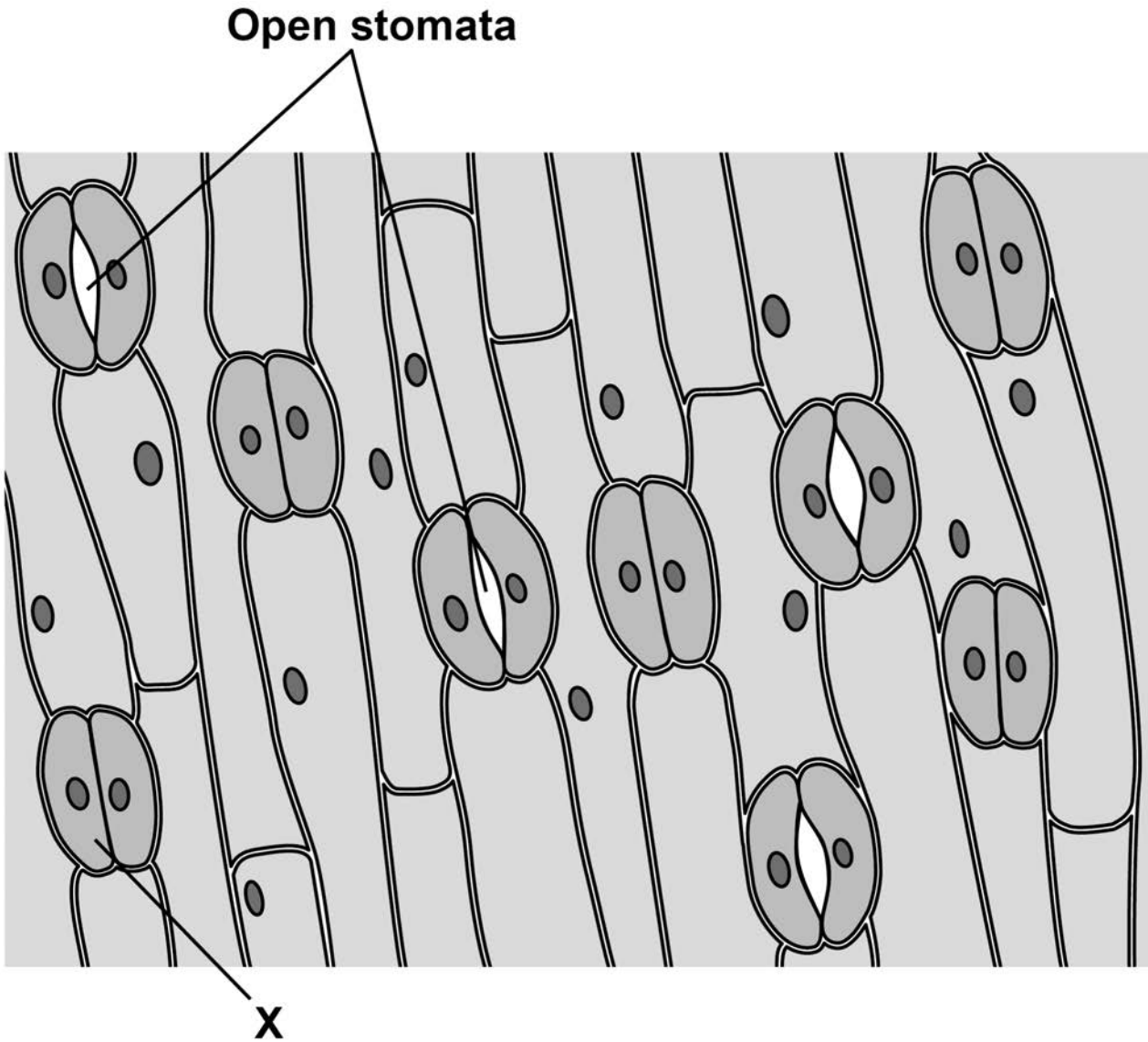
[Turn over]



02

FIGURE 2 shows part of a plant leaf seen through a microscope.

FIGURE 2



0 2 . 1 X is a specialised plant cell.

What type of cell is X? [1 mark]

Tick (✓) ONE box.

Guard cell

Meristem cell

Xylem cell

[Turn over]



0 2 . 2 Cell X is 0.0083 mm in length.

How long is cell X in micrometres (μm)?

1 mm = 1000 μm

[1 mark]

Tick (\checkmark) ONE box.

0.000083 μm

0.083 μm

0.83 μm

8.3 μm



- 0 2 . 3** Calculate the percentage of stomata that are open in FIGURE 2, on page 12. [2 marks]

Percentage = _____ %

- 0 2 . 4** What is the function of stomata in a leaf?
[1 mark]

Tick (✓) ONE box.

To allow water to enter the leaf

To control the transport of sugar

To control water loss from the leaf

To increase the temperature of the leaf

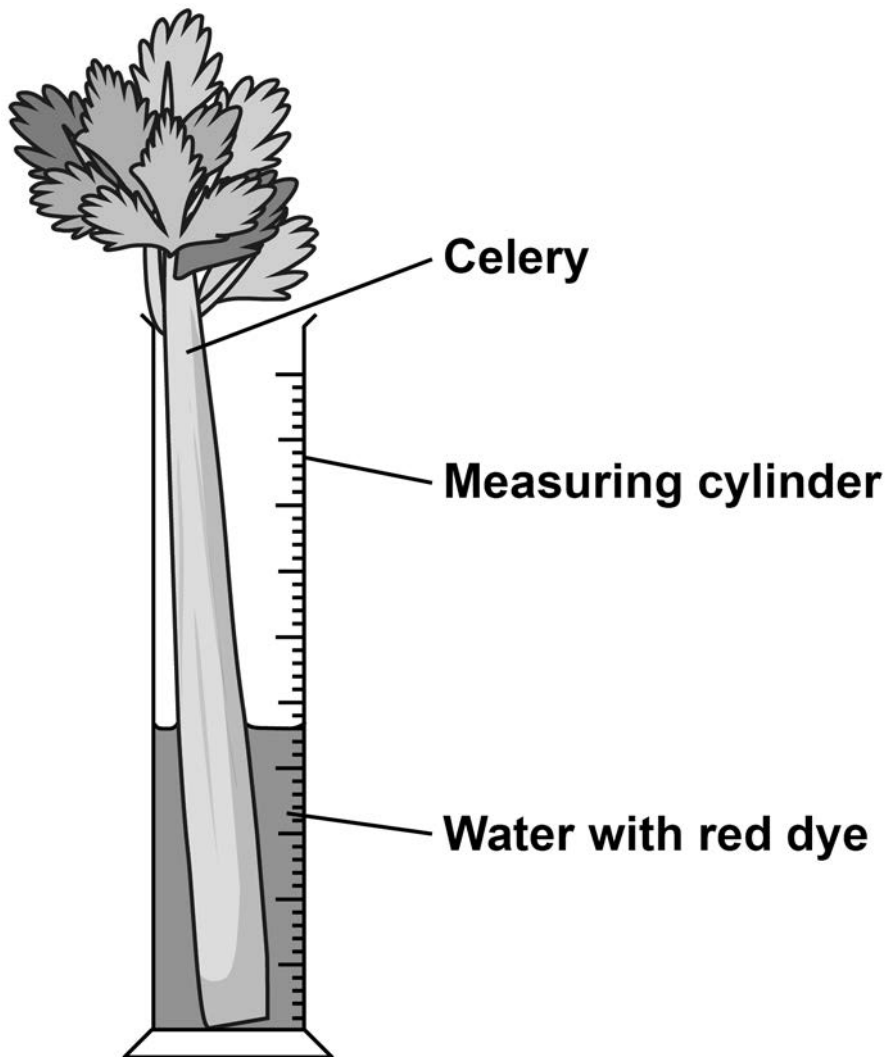
[Turn over]



A teacher used celery in an experiment to show water uptake in plants.

FIGURE 3 shows the apparatus used.

FIGURE 3



02.6

The number of celery leaves on the celery stalk affects the RATE of water uptake.

Describe how the experiment could be altered to measure this effect. [2 marks]

02.7 Give TWO ways a student could increase the rate of water uptake of a plant in a school laboratory. [2 marks]

1

2

12

[Turn over]



0 3 Four foods were tested for starch, sugar and protein.

TABLE 2 shows the results.

TABLE 2

Food	Test for starch: colour after iodine test	Test for sugar: colour after Benedict's test	Test for protein: colour after Biuret test
A	Blue-Black	Brick red	Blue
B	Orange	Blue	Lilac
C	Blue-Black	Yellow	Blue
D	Orange	Orange	Lilac

0 3 . 1 Give **THREE** conclusions about food D.
[3 marks]

1 _____



2 _____

3 _____

03.2 Starch is broken down into glucose.

**Which type of enzyme breaks down starch?
[1 mark]**

Tick (✓) ONE box.

Carbohydrase

Lipase

Protease

[Turn over]



03.3 Which part of a cell releases energy from glucose? [1 mark]

Tick (✓) ONE box.

Mitochondria

Nucleus

Ribosomes

Vacuole



03.4 Which food in TABLE 2, on page 20, would be the most suitable for a person with Type 2 diabetes to eat?

Give TWO reasons for your answer. [3 marks]

Food _____

Reason 1 _____

Reason 2 _____

8

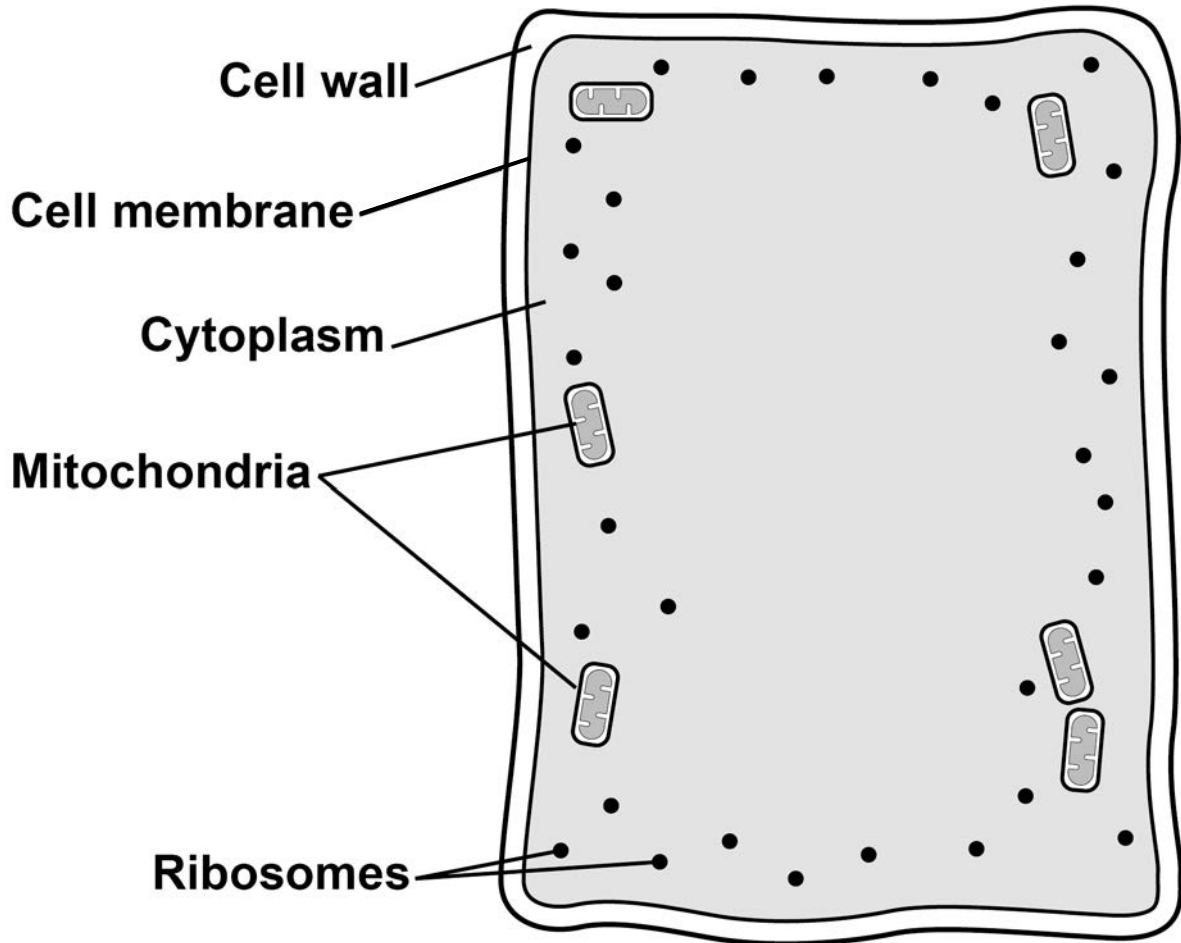
[Turn over]



04

FIGURE 4 shows some parts of a plant leaf cell.

FIGURE 4



04.1

Name THREE parts of a plant leaf cell that are missing from FIGURE 4. [3 marks]

1 _____

2 _____

3 _____

04.2

What is the function of the cell wall in a plant cell? [1 mark]

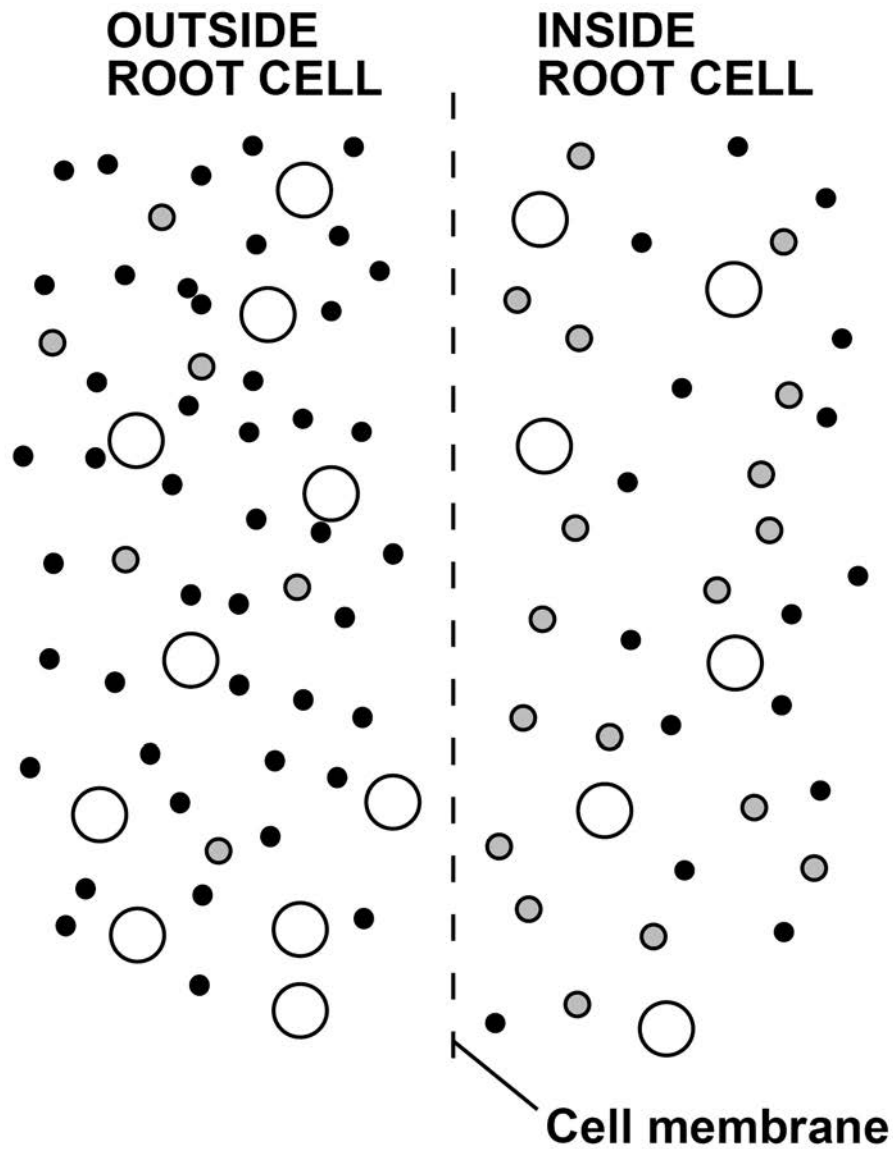
[Turn over]



Root cells absorb substances from the soil.

FIGURE 5 shows the concentration of different substances outside a root cell and inside a root cell.

FIGURE 5



KEY

- Water
- Potassium ion
- Substance C



0 4 . 3 The cell membrane of a plant cell is partially permeable.

What does partially permeable mean?
[1 mark]

Tick (✓) ONE box.

Allows all substances through

Allows no substances through

Allows some substances through

0 4 . 4 How does water move into the root cell in FIGURE 5? [1 mark]

Tick (✓) ONE box.

By active transport

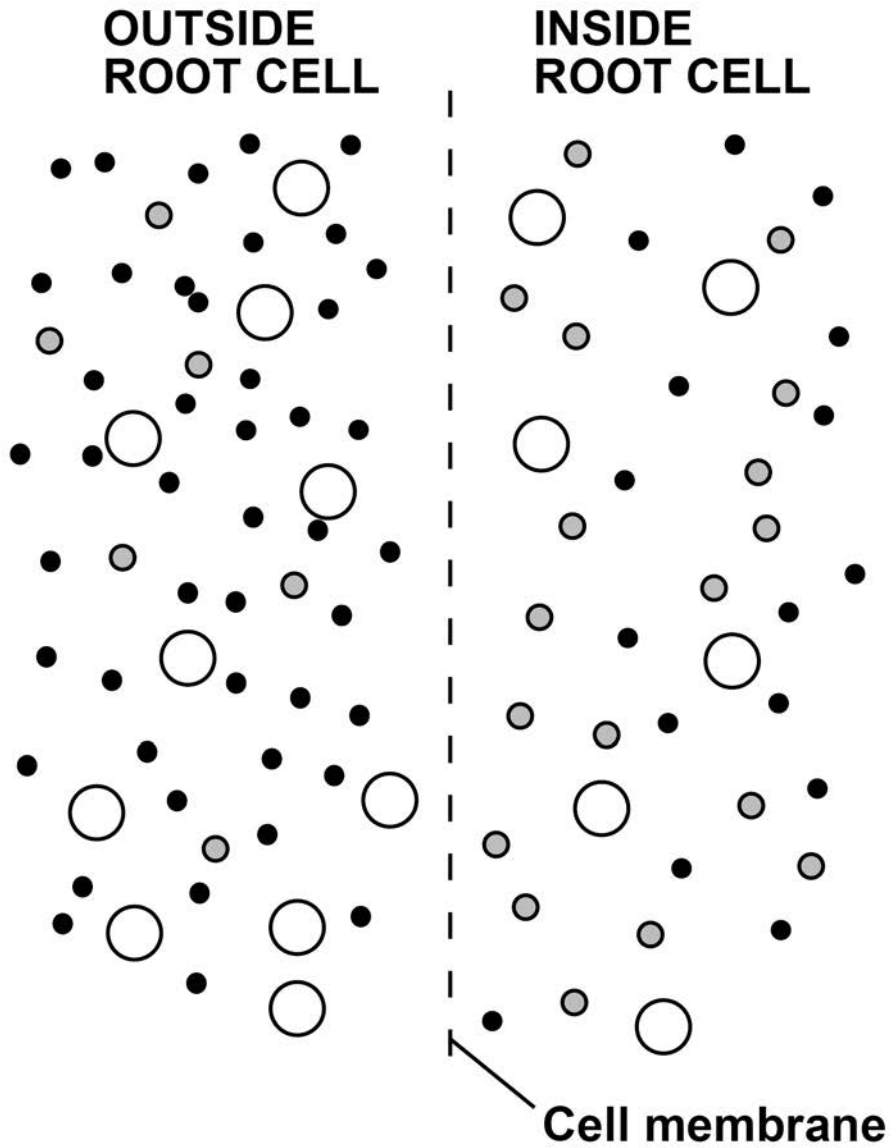
By evaporation

By osmosis

[Turn over]



Repeat of FIGURE 5



KEY

- Water
- Potassium ion
- Substance C



0 4 . 5 How do potassium ions move into the root cell in FIGURE 5? [1 mark]

Tick (✓) ONE box.

By active transport

By diffusion

By osmosis

0 4 . 6 Explain why substance C in FIGURE 5 does NOT move into the root cell. [2 marks]

[Turn over]



A student investigated the effect of different concentrations of sugar solution on the size of potato cubes.

This is the method used.

1. Cut one potato cube.
2. Record the size of the potato cube.
3. Place the potato cube into a beaker of sugar solution.
4. After 1 hour, record the size of the potato cube.
5. Repeat steps 1–4 using different concentrations of sugar solution.

04.7

Give THREE factors the student should control in the investigation. [3 marks]

1 _____

2 _____



3

0 4 . 8

What piece of equipment could the student use to accurately measure the length of each cube? [1 mark]

Tick (✓) ONE box.

Electronic balance

Measuring cylinder

Tape measure

Vernier callipers

[Turn over]



04.9

A potato cube is placed in sugar solution that is the same concentration as the concentration inside the potato cells.

What will happen to the size of the potato cube? [1 mark]

Tick (✓) ONE box.

The potato cube will decrease in size

The potato cube will increase in size

The potato cube will stay the same size

14



BLANK PAGE

[Turn over]



0 5 Plants can photosynthesise.

0 5 . 1 Complete the word equation for photosynthesis. [1 mark]

carbon dioxide + water →

glucose + _____

0 5 . 2 Light is needed for photosynthesis.

Name the green pigment that absorbs light for photosynthesis. [1 mark]

05.3 Plants need carbon dioxide, water and energy for photosynthesis.

Complete the sentences. [3 marks]

Carbon dioxide is obtained from the

_____ .

Plant roots obtain water from the

_____ .

The energy for photosynthesis is from the

_____ .

[Turn over]

A rose bush has a disease called rose black spot.

0 5 . 4 What type of microorganism causes rose black spot? [1 mark]

Tick (✓) ONE box.

Bacterium

Fungus

Protist

Virus



0 5 . 5 Give TWO ways to prevent the spread of rose black spot to a different rose bush in the same area. [2 marks]

Tick (✓) TWO boxes.

Use a water spray to keep the leaves wet

Move the diseased rose bush to a different area

Remove the spotty leaves and burn them

Treat the rose bush with antibiotics

Give the rose bush liquid fertiliser

[Turn over]



- 05.6** FIGURE 6 shows a plant cell and the microorganism that causes rose black spot.

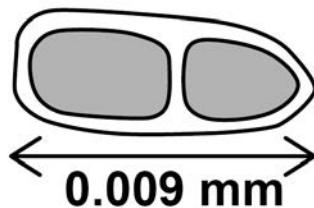
FIGURE 6

The diagram is NOT drawn to scale.

PLANT CELL



MICROORGANISM

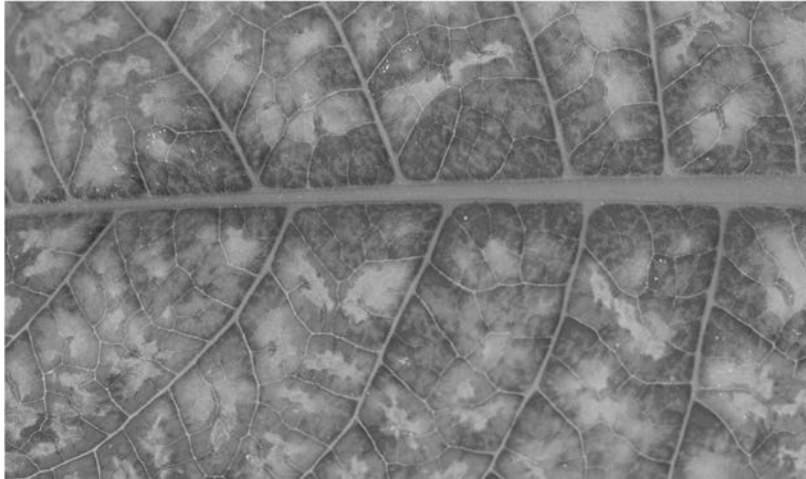


Calculate how many times longer the plant cell is than the microorganism that causes rose black spot. [1 mark]

Number of times longer = _____

FIGURE 7 shows part of a leaf from a tomato plant with a different plant disease.

FIGURE 7



05.8 Name the plant disease shown in **FIGURE 7**.
[1 mark]

14

BLANK PAGE

[Turn over]



06

New cells are made by cell division.

The body cells of a mosquito each contain six chromosomes.

FIGURE 8 shows a body cell of a mosquito.

FIGURE 8



FIGURE 9 shows four cells formed from the cell in FIGURE 8.

FIGURE 9



A



B



C



D



0 6 . 1 Which cell in **FIGURE 9** shows a normal muscle cell from a mosquito? [1 mark]

Tick (✓) **ONE** box.

A

B

C

D

0 6 . 2 Which cell in **FIGURE 9** shows a normal egg cell from a mosquito? [1 mark]

Tick (✓) **ONE** box.

A

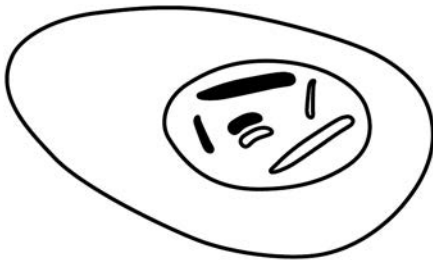
B

C

D



Repeat of FIGURE 9



A



B



C



D

06.3

Which cell in FIGURE 9 shows an abnormal body cell from a mosquito?

Give a reason for your answer. [2 marks]

Cell _____

Reason _____

[Turn over]



Repeat of FIGURE 8



0 6 . 4 Which process would produce cells that are identical to the body cell in FIGURE 8?
[1 mark]

Tick (✓) ONE box.

Evolution

Fertilisation

Meiosis

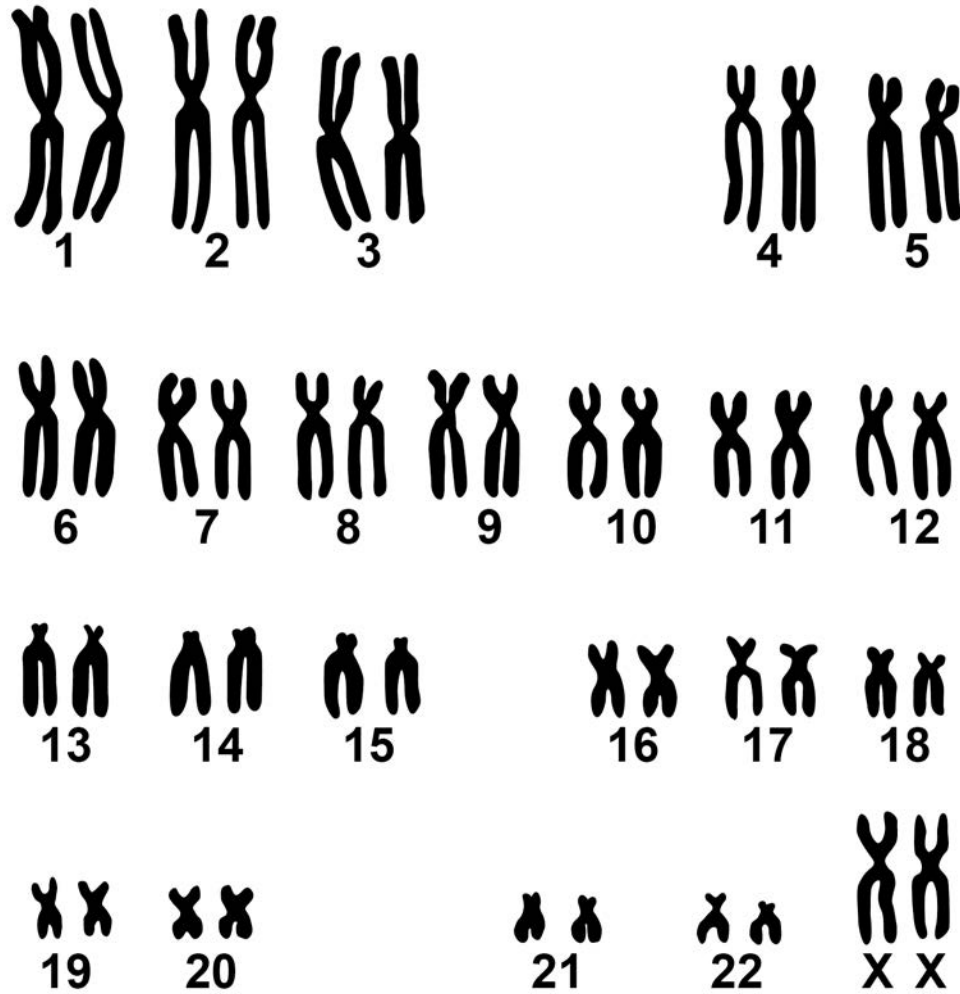
Mitosis

[Turn over]



06.5 FIGURE 10 shows the chromosomes from one human body cell.

FIGURE 10



What evidence is there in FIGURE 10 to show that this cell is from a female? [1 mark]

Eye colour is an inherited characteristic.

Brown eye colour is caused by a dominant allele, B.

Blue eye colour is caused by a recessive allele, b.

06.6 What is the genotype of a person with blue eyes? [1 mark]

[Turn over]



06.7 A man with brown eyes and a woman with brown eyes have a child.

Complete FIGURE 11 on the opposite page.

You should:

- **show the alleles the child could inherit**
- **include the eye colour for each combination of alleles**
- **give the probability of the child having brown eyes.**

[4 marks]



FIGURE 11

		WOMAN	
		B	b
MAN	B	BB Eye colour: brown	Eye colour: _____
	b	Eye colour: _____	Eye colour: _____

Probability of child having brown eyes =

[Turn over]



06.8 Some animals are selectively bred for specific characteristics.

FIGURE 12 shows a racing greyhound.

FIGURE 12



The greyhound has been selectively bred to run fast.

Suggest TWO features the greyhound has that enable it to run fast.

Use FIGURE 12. [2 marks]

1 _____

2 _____

13

[Turn over]



07

Students in four groups measured their reaction times.

TABLE 3 shows the ranges of reaction times for each group.

TABLE 3

Group	Range of reaction times in seconds (s)
A	0.14 – 0.59
B	0.42 – 1.20
C	0.42 – 0.76
D	0.63 – 1.02



07.1 Which group had all their results in the normal range for reaction time? [1 mark]

Tick (✓) ONE box.

A

B

C

D

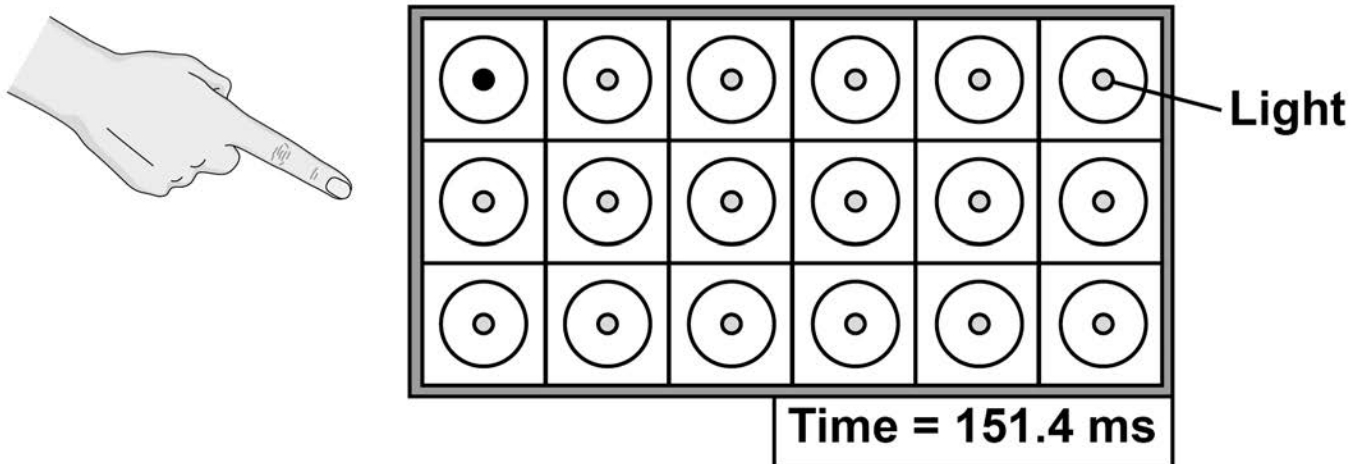
[Turn over]



A sports scientist investigated the reaction times of athletes.

FIGURE 13 shows a light box used by the sports scientist.

FIGURE 13



This is the method used.

1. Stand in front of the light box.
2. When a light comes on in a circle, touch the circle as quickly as possible.
3. Record the time taken, as shown on the light box display.
4. Repeat steps 2–3 another four times.



07.3 Which word describes cells in the eye that detect the light? [1 mark]

Tick (✓) ONE box.

Coordinators

Effectors

Receptors

Responses

[Turn over]



The scientist compared the reaction time of a male athlete and a female athlete.

07.4 Give TWO factors the scientist should have controlled in the investigation.

Do NOT refer to caffeine in your answer.
[2 marks]

1 _____

2 _____

BLANK PAGE

[Turn over]



TABLE 4 shows the results.

TABLE 4

	Reaction time in milliseconds (ms)	
	MALE ATHLETE	FEMALE ATHLETE
TEST 1	153.6	138.2
TEST 2	154.2	145.7
TEST 3	150.0	149.1
TEST 4	151.4	142.9
TEST 5	153.9	140.6



07.5 Which test shows the median reaction time for the female athlete? [1 mark]

Tick (✓) ONE box.

Test 1

Test 2

Test 3

Test 4

Test 5

[Turn over]



Repeat of TABLE 4

	Reaction time in milliseconds (ms)	
	MALE ATHLETE	FEMALE ATHLETE
TEST 1	153.6	138.2
TEST 2	154.2	145.7
TEST 3	150.0	149.1
TEST 4	151.4	142.9
TEST 5	153.9	140.6

07.6 Calculate the mean reaction time for the male athlete.

Give your answer to 4 significant figures.
[2 marks]

Mean reaction time = _____ ms



- 07.7** The reaction time for the female athlete in test 1 was 138.2 ms

Give this reaction time in seconds. [1 mark]

Reaction time = _____ s

- 07.8** Why does repeating the test give more valid results than doing the test only once? [1 mark]

Tick (✓) ONE box.

Anomalies can be identified

Results are reproducible

Errors are prevented

Results are more precise

[Turn over]



07.9 The scientist concluded:

‘Female athletes have shorter reaction times than male athletes.’

Suggest why this conclusion may NOT be valid. [1 mark]

16



BLANK PAGE

[Turn over]



0 8

This question is about carbon dioxide emissions.

TABLE 5 shows information about carbon dioxide emissions in the UK.

TABLE 5

Year	Mass of carbon dioxide in kg $\times 10^5$		
	Emitted from electricity production	Emitted from paper production	Total emitted from all sources
2006	1263	54	6314
2009	902	32	5575
2012	1258	29	5567
2015	768	27	5043

0 8 . 1

Suggest TWO reasons why carbon dioxide emissions from paper production decreased from 2006 to 2015. [2 marks]

1



2

0 8 . 2 Suggest TWO reasons why carbon dioxide emissions from electricity production decreased from 2012 to 2015. [2 marks]

1

2

[Turn over]



- 08.3** Calculate the percentage of the total carbon dioxide emissions in 2006 that was from electricity production. [2 marks]

Percentage = _____ %

- 08.4** Explain the possible consequences of a future increase in carbon dioxide emissions. [6 marks]



12

END OF QUESTIONS



BLANK PAGE



BLANK PAGE

For Examiner's Use	
Question	Mark
1	
2	
3	
4	
5	
6	
7	
8	
TOTAL	

Copyright information

For confidentiality purposes, from the November 2015 examination series, acknowledgements of third-party copyright material are published in a separate booklet rather than including them on the examination paper or support materials. This booklet is published after each examination series and is available for free download from www.aqa.org.uk after the live examination series.

Permission to reproduce all copyright material has been applied for. In some cases, efforts to contact copyright-holders may have been unsuccessful and AQA will be happy to rectify any omissions of acknowledgements. If you have any queries please contact the Copyright Team, AQA, Stag Hill House, Guildford, GU2 7XJ.

Copyright © 2019 AQA and its licensors. All rights reserved

IB/M/MW/Jun19/8465/2F/E3

